

If the material is damaged, Trent & Dove will take measures to repair, seal or remove it immediately in high risk situations, or as part of a maintenance program if the risk is low. Trent & Dove Housing will ensure that any such work is done by specialist licensed contractors who work to strict safety standards. Tenants will be kept informed of actions in relation to our Asbestos Management Policy.

What are your responsibilities?

Carrying out any work on asbestos containing materials without knowledge, expertise and personal protection puts people's health at risk. Changes to the structure or fabric of your home are not permitted under your tenancy agreement without prior written approval.

If you want to carry out any home improvements that may disturb an asbestos containing material you must contact your Area office for permission to ensure proper controls are put in place to reduce exposure to you, your family and the person carrying out the work (if not yourself). If you carry out any work or permit others to carry out work without written approval, you will be liable for any costs of dealing with any asbestos incidents.

What do I do if I have a problem?

If you think you have asbestos in your home or are worried about any damaged asbestos material don't try to deal with it yourself - contact a Maintenance Surveyor at your Local Office.

Trinity Square **01283 528528**
Uttoxeter **01889 561870**



Where can I get more information?

Useful Websites:

www.hse.gov.uk/asbestos
The Health & Safety Executive

www.nasca.org.uk
National Society for Clean Air
& Environmental Protection

www.aic.org.uk
Asbestos Information Centre

www.eaststaffsbc.gov.uk
East Staffordshire Borough Council

If you would like information in another language or format,
please ask us

यदि आपको सूचना किसी अन्य भाषा या अन्य रूप में चाहिये तो कृपया हमसे कहे - Hindi

اگر این اطلاعات را به زبانی دیگر و یا در فرمتی دیگر میخواهید لطفاً از ما درخواست کنید - Farsi

اگر آپ کو معلومات کسی دیگر زبان یا دیگر شکل میں درکار ہوں تو برائے مہربانی ہم سے پوچھیے۔ - Urdu

Jezeli chcieliby Państwo uzyskać informacje w innym języku lub w innym formacie,
prosimy dać nam znać. - Polish

ئەگەر زانیاریت بە زمانیکی کە یا بە فۆرمیکی کە دەوی تکایە داوامان لی بکە - Kurdish



Trinity Square, Horninglow Street,
Burton upon Trent, Staffordshire, DE14 1BL.

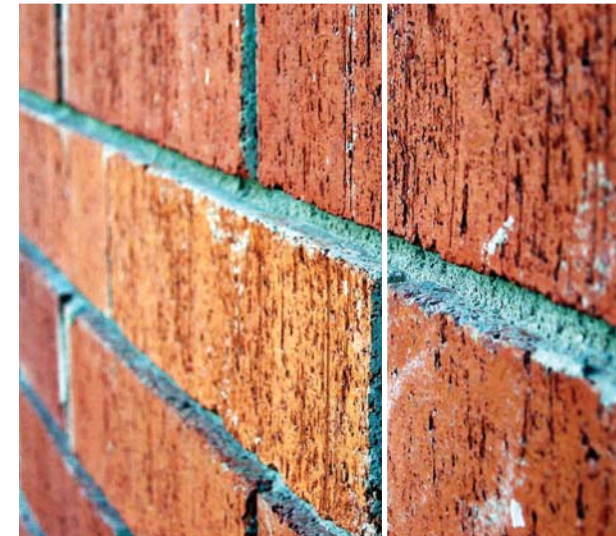
Telephone: 01283 528528

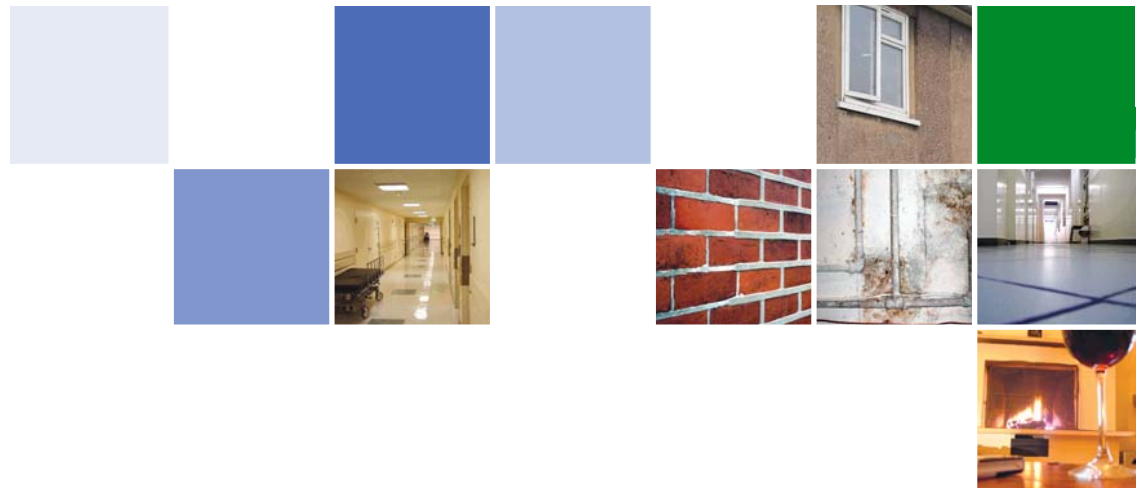
Facsimile: 01283 528699

Website: www.trentanddove.org



Asbestos in the home





This leaflet is all about asbestos -

what it is, where it may be found in your home and how to ensure that you or your family are not put at risk

What is asbestos?

Asbestos is a general name given to a group of natural minerals which are mined all over the world. There are three types of asbestos: Blue asbestos (crocidolite), brown asbestos (amosite) and white asbestos (chrysotile).

Asbestos is very strong, flexible and stable. Because of these properties it was used widely in the manufacture of building materials between the 1930s and the mid-1980s and most extensively in the 60s & 70s. So if your home was built or refurbished during this period, the chances are it will contain some Asbestos Containing Materials (ACMs). Asbestos can be found in its pure form but mainly only in commercial or industrial premises. In the domestic environment, it is usually found mixed with other substances to give the resulting building materials strength and heat resistance.



Where might you find it in and outside the home?

The following is a list of some of the domestic uses of Asbestos Containing Materials:

- Airbricks
- Bath Panels
- Boilers & pipework
- Cold water tanks
- Corrugated cement sheeting - sheds/garages
- Decorative coatings e.g. artexing
- Fire surrounds
- Flooring materials - vinyl/thermoplastic floor tiles; paper backing
- Flue pipes
- Rainwater guttering and downpipes
- Roof & exterior walls
- Soffit boards
- Soil Pipes
- Sprayed coating on steel framed buildings
- Wall boarding - internal partitions, airing cupboard linings, duct & pipe covers

What are the health risks?

Any asbestos containing material that is undamaged will not present a health risk but when asbestos materials are damaged, drilled, sawn, scrubbed or sanded, the risk can be increased.

When asbestos containing materials get damaged, asbestos fibres can be released into the air. These fibres can penetrate deep into the lungs where they may stay for a long time. This can cause cancer and thickening of the lungs. The greater the exposure the greater the risk but there is no safe exposure.

What are Trent & Dove doing about asbestos in the home?

Trent & Dove Housing have an Asbestos Management Policy which sets out how we are going to identify and manage asbestos in our commercial and domestic premises.

Trent & Dove will survey all properties to identify the locations of any materials suspected to contain asbestos.

All asbestos containing material that is in good condition will stay where it is and it's condition will be reviewed from time to time.